

The International
UN Team



unforklift.com

UN FORKLIFT

N Series Heavy Duty Diesel Forklift Truck

5.0-10.0 Ton Diesel Forklift



Zhejiang UN Forklift Co.,Ltd.

Address: NO.1, Road One, Xindeng New District, Fuyang,
Hangzhou, Zhejiang 311404, China

Tel: +86-571-86888377/87565705/86888355/86888388

Fax: +86-571-86888399

E-mail: info@unforklift.com

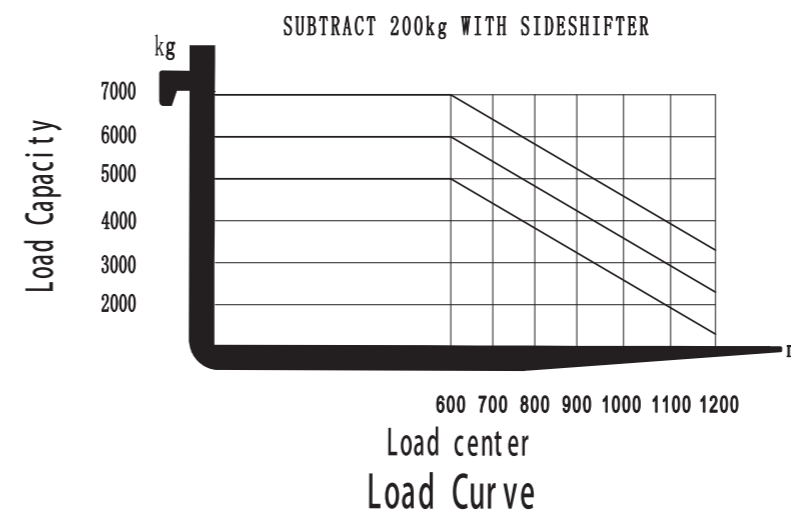
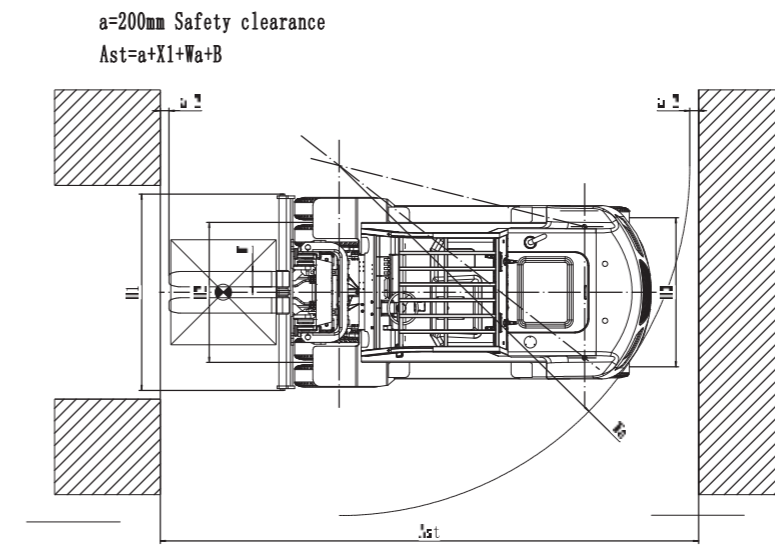
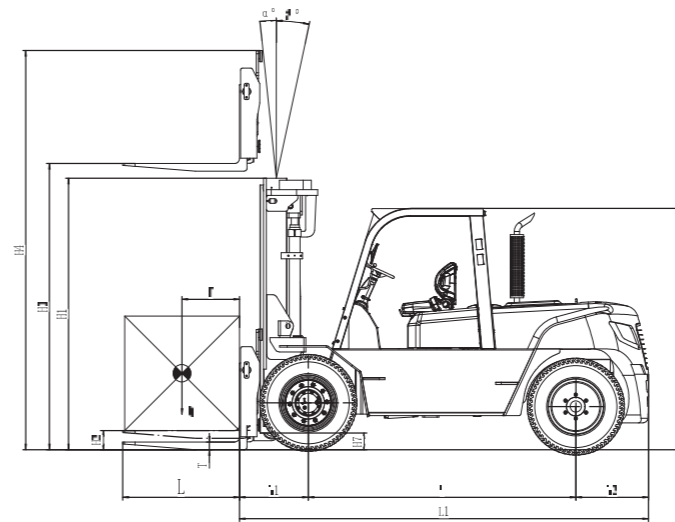
Parts Inquiry: parts@unforklift.com

www.unforklift.com



MAIN SPECIFICATIONS

General	1	Manufacturer	UN					
	2	Model	FD50T	FD60T	FD70T	FD80T	FD100T	
	3	Power Type	Diesel					
	4	Rated Load Capacity	Q(kg)	5000	6000	7000	8000	10000
	5	Load Centre	C(mm)	600				
Characteristic & Dimension	6	Rated Lift Height	H3(mm)	3000				
	7	Free Lift Height	H2(mm)	152	152	152	120	120
	8	Fork Size (L×W×T)	mm	1220×150×60	1220×150×60	1220×150×65	1220×175×75	1220×175×80
	9	Mast Tilt Angle (F/R, α°/β°)	deg	6°/12°				
	10	Fork Overhang (Wheel Center to Fork Face)	X1(mm)	585	585	585	721	721
	11	Rear Overhang	X2(mm)	640	640	720	760	760
	12	Ground Clearance (Bottom of Mast)	H7(mm)	200	200	200	250	250
	13	Length to Face of Fork (Without Fork)	L1(mm)	3510	3510	3590	4040	4270
	14	Overall Width	B1(mm)	1995	1995	1995	2165	2165
	15	Mast Lowered Height	H1(mm)	2515	2515	2615	2695	2845
	16	Mast Extended Height (With Backrest)	H4(mm)	4437	4437	4437	4020	4260
Performance	17	Overhead Guard Height	H5(mm)	2445	2445	2445	340-2000	440-2140
	18	Turning Radius (Outside)	Wa(mm)	3280	3280	3340	3700	3900
	19	Min. Aisle width for pallets	Ast(mm)	5285	5285	5365	5845	6045
	20	Travel Speed (No Load)	km/h	23/21	23/21	23/21	19.5/16	19.5/16
	21	Lifting Speed (No Load/Full Load)	mm/sec	530/500	530/500	530/490	400/360	380/328
	22	Lowering Speed (No Load/Full Load)	mm/sec	≥300, ≤600	≥300, ≤600	≥300, ≤600	≥300, ≤600	≥300, ≤600
	23	Max. Drawbar Pull (Full Load)	KN	53	53	52	58	57
	24	Max. Gradeability (Full Load)	%	32	27	24	20	20
Chassis	25	Tyre (Front x 4)	mm	8.25-15-14PR	8.25-15-14PR	8.25-15-14PR	8.25-20-14PR	9.00-20-14PR
	26	Tyre (Rear x 2)	mm	8.25-15-14PR	8.25-15-14PR	8.25-15-14PR	8.25-20-14PR	9.00-20-14PR
	27	Front Tread	mm	1470	1470	1470	1600	1600
	28	Rear Tread	mm	1700	1700	1700	1700	1700
Weight	29	Wheelbase	Y(mm)	2250	2250	2250	2500	2800
	30	Total Weight	kg	7980	8640	9350	11850	12900
	31	Front Axle Weight Distribution (Full Load)	kg	11660	13050	14570	17800	20610
	32	Rear Axle Weight Distribution (Full Load)	kg	1320	1590	1780	2050	2290
Power & Transmission	33	Front Axle Weight Distribution (No Load)	kg	4010	3880	3860	4740	5660
	34	Rear Axle Weight Distribution (No Load)	kg	3970	4760	5490	7110	8240
	35	Battery	V/Ah	24/90				
	36	Fuel Tank Capacity	L	120				
Power & Transmission	37	Transmission Type	Powershift					
	38	Transmission Stage (FWD/RVS)	2/2					
	39	Operating Pressure (For Attachments)	Mpa	20				



Engine

XICHAi

Model: CA4DF3-12GCG3U
 Manufacturer: XICHAi
 Rated Output / r.p.m.: 85KW/2200RPM
 Rated Torque / r.p.m.: 460N·m/ 1300~1700RPM
 No. of Cylinder: 4
 Bore x Stroke: 110×125mm
 Displacement: 4.75L

CHAOCHAI

Model: 6102BG6
 Manufacturer: CHAOCHAI
 Rated Output / r.p.m.: 80.9KW/2500RPM
 Rated Torque / r.p.m.: 353N·m/1650RPM
 No. of Cylinder: 6
 Bore x Stroke: 102×118mm
 Displacement: 5.785L

ISUZU

Model: A-6BG1QC
 Manufacturer: ISUZU
 Rated Output / r.p.m.: 82KW/2000RPM
 Rated Torque / r.p.m.: 416N·m/1400-1600RPM
 No. of Cylinder: 6
 Bore x Stroke: 105×125mm
 Displacement: 5.785L

CUMMINS

Model: QSF3.8T3TC115
 Manufacturer: CUMMINS
 Rated Output / r.p.m.: 86KW/2200RPM
 Rated Torque / r.p.m.: 470N·m/1100-1700RPM
 No. of Cylinder: 4
 Bore x Stroke: 107×124mm
 Displacement: 3.76L

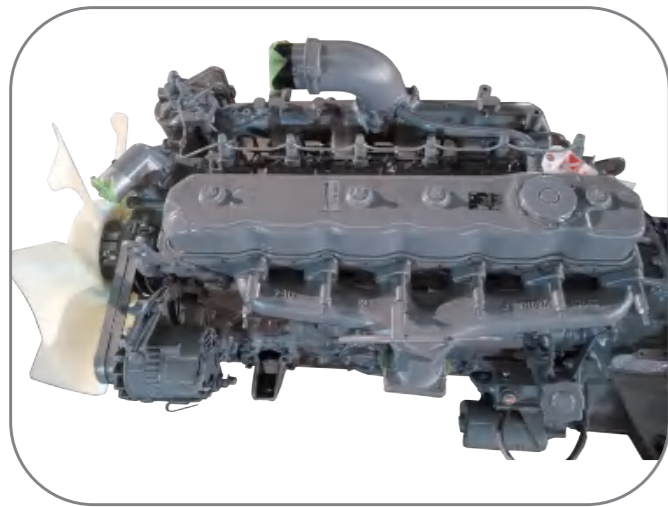


N series Heavy Duty Diesel Forklift Truck

Heavy Duty Diesel Forklift 5.0-10.0 Ton

UN 5.0-10.0 ton heavy duty diesel forklift trucks are designed for high performance, maximum efficiency and lowest possible operating cost. Its robust components enable the forklift to operate over the rough terrain with excellent maneuverability.

Reliability



Powerful engine: 6-cylinder engine with low noise and minimal vibration. The high torque and high output at low rpm to make sure the high performance.



Excellent cooling system: Advanced cooling technology matching with large-capacity water tank and large exhaust window improve cooling channel effectively.



Strengthened and tough axles & large turning angle: Make it efficient and flexible handling and steering.

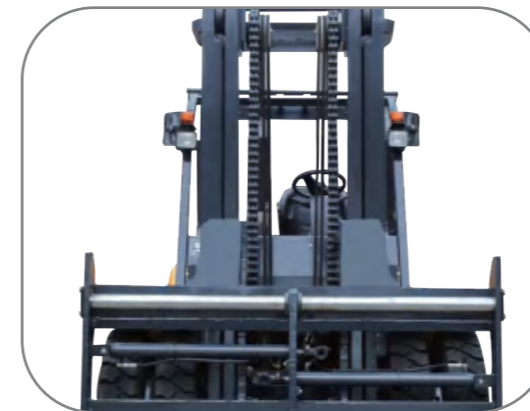


The accumulator in brake system with full of compression energy. It can be changed to hydraulic energy immediately to the brake system and makes the brake prompt respond and more smoothly.

Safety



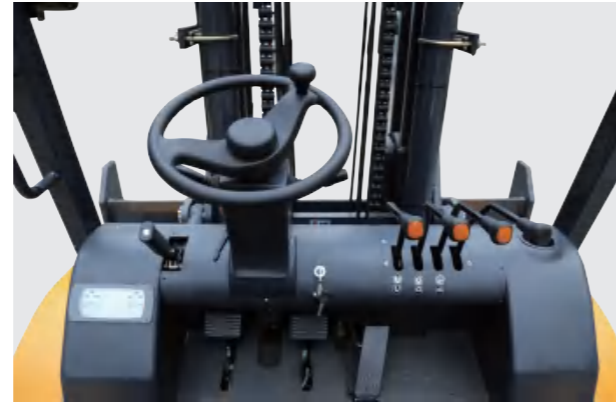
High intensity overhead guard guarantees the operator's safety.



Heavy duty welded mast: Wide designed with good visibility, ensures its excellent forward visibility, improves working efficiency and safety.



Comfort



Adjustable seat, adjustable steering wheel, large foot space and wide operation space can provide the maximum comfort and let the driver enjoy the process of work.



Intelligent instrument panel (fuel level, hour meter, water temperature, engine oil indicator, charger indicator, preheating indicator, oil filter alarm, forward, reverse and neutral direction indicators)



Low, large and anti skid pedal

Easy Service and Maintenance



Wide opening engine hood for easy servicing.



Optimization internal layout for improved serviceability.



Rear cover available to be opened for easy radiator cleaning.

5.0-7.0 TON MAST SPECIFICATIONS & RATED CAPACITIES

Mast Type	Mast Name	Max. Fork Height (mm)	Load Capacity (kg) Load Center 600mm			Overall Height (mm)						Free Lift (mm)				Tilt Angle
						Extended			Extended			Without Backrest		With Bracket		
			Lowered	Without Backrest	With Backrest	Lowered	Without Backrest	With Backrest	Without Backrest	With Bracket	Without Backrest	With Bracket				
			5.0t	6.0t	7.0t	5.0t/6.0t			7.0t			5.0t/6.0t		7.0t		
2-Stage Wide View Mast	M300	3000	5000	6000	7000	2515	3967	4437	2615	4067	4437	152		152		6-12
	M330	3300	5000	6000	7000	2665	4267	4737	2765	4367	4737	152		152		6-12
	M350	3500	5000	6000	7000	2765	4467	4937	2865	4567	4937	152		152		6-12
	M370	3700	5000	6000	7000	2890	4667	5137	2990	4767	5187	152		152		6-12
	M400	4000	5000	6000	7000	3065	4967	5437	3165	5067	5437	152		152		6-12
	M430	4300	5000	6000	7000	3165	5267	5737	3265	5367	5637	152		152		6-12
	M450	4500	5000	6000	7000	3315	5467	5937	3415	5567	5937	152		152		6-12
	M470	4700	5000	6000	7000	3440	5667	6137	3540	5767	6187	152		152		6-6
	M500	5000	5000	6000	7000	3565	5967	6437	3665	6067	6437	152		152		6-6
3-Stage Full Free Wide View Mast	M550	5500	4750	5700	6600	3865	6467	6937	3965	6567	6937	152		152		3-6
	M600	6000	4400	5400	6400	4115	6967	7437	4215	7067	7437	152		152		3-6
	TFM400	4000	5000	6000	7000	2510	5112	5437	2610	5112	5437	1378	1065	1378	1165	6-6
	TFM430	4300	4500	5600	6500	2625	5412	5737	2725	5412	5737	1494	1180	1494	1280	6-6
	TFM450	4500	4500	5600	6000	2675	5612	5937	2775	5612	5937	1544	1230	1544	1330	6-6
	TFM470	4700	4500	5600	6000	2775	5812	6137	2875	5812	6137	1644	1330	1644	1430	6-6
	TFM500	5000	4500	5600	6000	2840	6112	6437	2940	6112	6437	1708	1395	1708	1495	3-6
	TFM550	5500	4200	5300	6000	3005	6612	6937	3105	6612	6937	1874	1560	1874	1660	3-6
	TFM600	6000	4000	5000	6000	3220	7112	7437	3320	7112	7437	2044	1775	2044	1875	3-6

Note: With separated side shifter, load capacity subtract 350kg; With integrated side shifter, load capacity subtract 100kg.
*Double front wheels are standard.

8.0T MAST SPECIFICATIONS & RATED CAPACITIES

Mast Type	Mast Name	Max. Fork Height (mm)	Load Capacity (kg) Load Center 600mm		Overall Height (mm)		Free Lift (mm)	Tilt Angle (F/R)
					Lowered	Extended		
			8.0t	8.0t	8.0t			
2-Stage Wide View Mast	M300	3000	8000		2695	4130	120	6-12
	M350	3500	8000		2945	4630	120	6-12
	M400	4000	8000		3245	5180	120	6-12
	M450	4500	8000		3495	5680	120	6-12
	M500	5000	7750		3745	6180	120	6-6
	M550	5500	7400		4045	6730	120	3-6
	M600	6000	7000		4295	7230	120	3-6

10.0T MAST SPECIFICATIONS & RATED CAPACITIES

Mast Type	Mast Name	Max. Fork Height (mm)	Load Capacity (kg) Load Center 600mm		Overall Height (mm)		Free Lift (mm)	Tilt Angle (F/R)
					Lowered	Extended		
			10.0t	10.0t	10.0t			
2-Stage Wide View Mast	M250	2500	10000		2595	3785	140	6-12
	M300	3000			2845	4285	140	6-12
	M330	3300			2995	4585	140	6-12
	M350	3500			3095	4785	140	6-12
	M400	4000			3395	5320	140	6-12
	M450	4500			3645	5820	140	6-6
	M470	4700			3770	6070	140	6-6
	M500	5000			3895	6320	140	6-6
	M550	5500			4195	6870	140	3-6
	M600	6000			4445	7370	140	3-6
3-Stage Full Free Wide View Mast	TFM400	4000	8000		2695	5335	1325	6-12
	TFM430	4300	8000		2815	5695	1445	6-12
	TFM450	4500	7800		2865	5845	1495	6-12
	TFM470	4700	7500		2965	6145	1595	6-6
	TFM500	5000	7000		3030	6340	1660	6-6
	TFM550	5500	7000		3220	6760	1850	3-6
	TFM600	6000	6000		3420	7360	2050	3-6